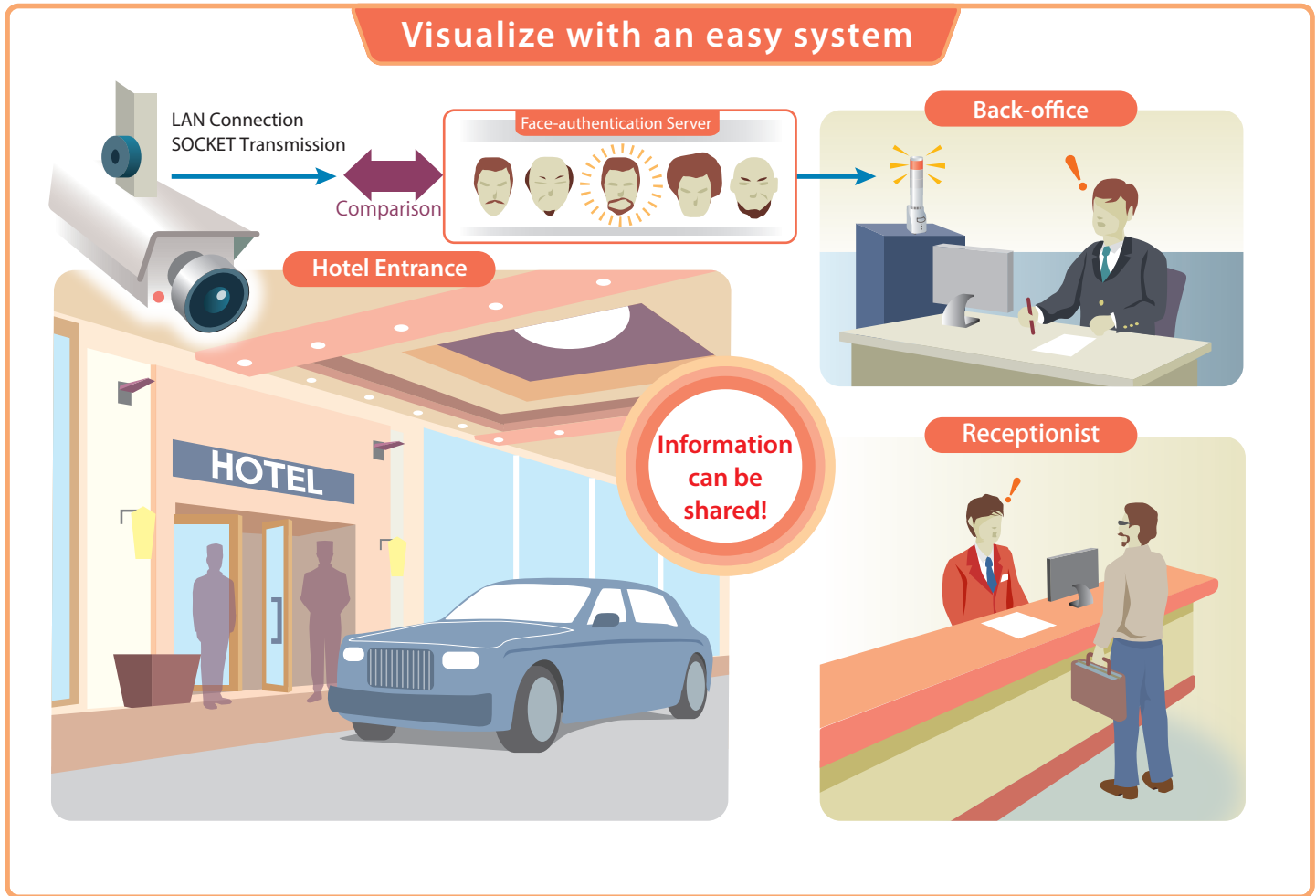


### Report the troublesome customer's information!



#### Implementation Merit

##### Before Implementing

In the hotel, a person's identity cannot be verified when a name reserved is different from before and with a customer who has been trouble in the past who cannot be determined as the same person or not.



##### After Implementing

Support comes as early as possible, since customer data and face authentication can be determined when different names are used.

#### Configuration/Application

##### Configuration

[Network Camera]

[Patlite]  
NH Series

##### Application

##### Face-authentication-linked System

The staff can announce the customer at the front or an administration building with the network monitor Signal Tower, and be able to promptly support the customer by manually following them.

**PATLITE Corporation**

[www.patlite.com](http://www.patlite.com)

•The company and trade names indicated above are registered trademarks for each company.

Copyright ©2016 PATLITE Corporation. All Rights Reserved.