

# SPECIFICATIONS

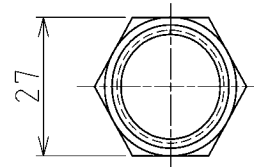
## [1. General Specifications]

Product Name	Pole
Model	22POLE-300SAT
Mounting Location	Indoor Only
Mounting Direction	Upright
Mass (Tolerance $\pm 10\%$ )	0.43kg
Remarks	There are no contents of controlled substances exceeding the threshold for the RoHS Directive.

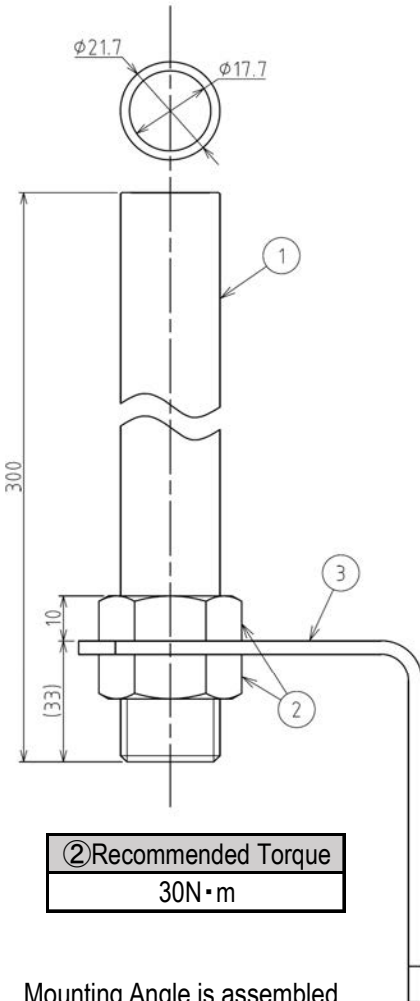
## [2. Outer Dimensions]

No.	Name	Material
1	Pole	SUS
2	Hexagon Nut M22	SUS
3	Mounting Angle	SUS

[mm]

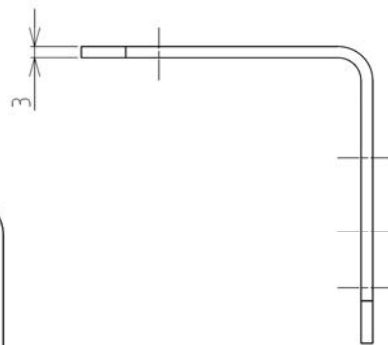
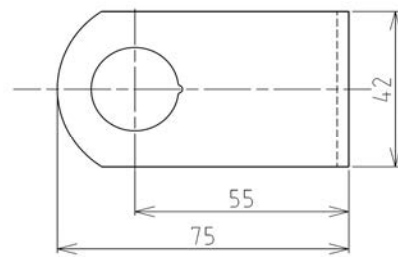


②Hexagon Nut M22 Dimension



②Recommended Torque  
30N·m

Mounting Angle is assembled in the oppsite direction at shipping.



③Mounting Angle Dimension

Screw / Nut	Recommended Torque
※1 M8×2pcs.	12.2N·m
※2 M10×2pcs.	

