



SKH-A

Revolving Warning Light

CE (12/24V Only)

Bulb



1 Alarm Sound (SKHB)

90dB at 1m (SKHB)

IP54 (SKH-SA, others IP23)

Ø118



Corrosion-proof plastic Revolving Warning Light for a variety of applications.

FEATURES

- Rotating parabolic reflector to enhance visibility from a distance.
- Vibration-resistant automobile bulb for extended bulb life.
- Includes an internal alarm of 90dB (at 1m) that is synchronized with the light operation.
- Upright, inverted, and sideways installation allowed for indoors* as well as outdoors.
- Dome is made from superior weather-resistant and light-translucent acrylic resin.
- Available Colors are Red, Amber, Green, and Blue.
- Has the CE mark and conforms to the requirements (for 12V, 24V type only) for the EC directive.

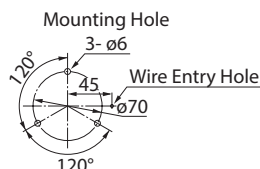
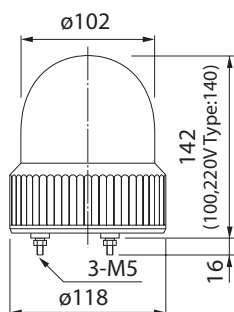
*SKH-SA installation allows upright and inverted installation only for indoor use.

Specifications

Model		Rated Voltage	Current Consumption	Flash Rate (fpm)	Bulb		Mass
SKH-A Series	SKHB-A Series				Ratings	Repl. No.	
SKH-101A	SKHB-12A	DC 12V	0.8A	170	12V 10W	9	400g
SKH-102A	SKHB-24A	DC 24V	0.5A		24V 10W	10	
SKH-110A	SKHB-100A	AC 100V	0.065A		12V 5W	12	600g
SKH-112A	SKHB-120A	AC 120V	0.07A				
SKH-120A	SKHB-200A	AC 200V	0.03A				
Ships/Boat	SKH-102SA	-	DC24V 0.5A		24V 10W	10	400kg
	SKH-110SA	-	AC 100V 0.1A		12V 5W	12	600g

Dimensions (Unit: mm)

Mounting Dimensions (DC Type)



Mounting Dimensions (AC Type)



How to Order

SKH - <input type="text"/> A - <input type="text"/>	
Model <input type="text"/>	Color <input type="text"/>
Rated Voltage	R: Red Y: Amber G: Green B: Blue P: Purple
101 : DC 12V 102 : DC 24V 110 : AC 100V 112 : AC 120V 120 : AC 200V	

SKHB - <input type="text"/> A - <input type="text"/>	
Model <input type="text"/>	Color <input type="text"/>
Rated Voltage	R: Red Y: Amber G: Green B: Blue P: Purple
12 : DC 12V 24 : DC 24V 100 : AC 100V 120 : AC 120V 200 : AC 200V	