

生産終了  
Production ended



# WH-A / WK-A

## Revolving Warning Light



WH-A/WK-A



WH-A



WK-A



### Bulb

1

Alarm Sound (WHB-A Only)

90dB at 1m

(WHB-A Only)

IP54

(B Type:IP23)

Φ100

Easily attachable to an electrical box with easy wiring to a terminal block.



Install in various directions when using for indoor applications.

- Sideways



- Upside-down



When installing the WHB, direct the buzzer in a downward direction.

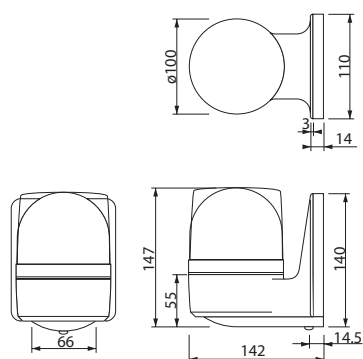
## Wall-mount Revolving Warning Light featuring easy wiring with terminal block.

### FEATURES

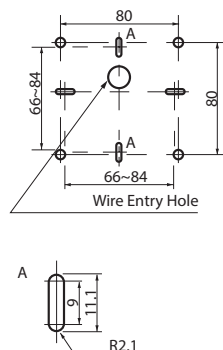
- Has the CE mark and conforms to the requirements (12V, 24V type only) for the EC directive.
- Upright, inverted, and sideways installation allowed for indoors as well as outdoors\*.
- Dome is made from superior weather-resistant and light-translucent acrylic resin.
- Rotating parabolic reflector to enhance visibility from a distance.
- Compact motor with high durability and energy-efficient characteristics.
- Vibration-resistant automobile bulb for extended bulb life.
- Main body is made of impact and heat resistant ABS resin.
- Available Colors are Red, Amber, Green, and Blue.
- Uses a terminal block for easy wiring.

\*WHB installation is upright only for outdoor use.

### Dimensions (Unit: mm)



### Mounting Dimensions



### Specifications

Model	Rated Voltage	Current Consumption	Flash Rate (fpm)	Bulb		Mass	
				Ratings	Repl. No.		
WK-12A	DC 12V	0.8A	170	12V 10W	9	550g	
WH-24A	DC 24V	0.5A		24V 10W	10		
WK-24A							
WH-100A	AC 100V	0.07A		12V 5W	12	750g	
WK-100A							
WH-120A	AC 120V	0.08A					
WK-120A							
WH-200A	AC 200V	0.04A					
WK-200A							
WKB-12A	DC 12V	0.85A		12V 10W	9	550g	
WHB-24A	DC 24V	0.5A		24V 10W	10		
WKB-24A							
WHB-100A	AC 100V	0.07A		12V 5W	12	750g	
WKB-100A							
WHB-120A	AC 120V						
WKB-120A							
WHB-200A	AC 200V						0.04A
WKB-200A							

### How to Order

Model	Color
WK	R: Red
WH	Y: Amber
	G: Green
	B: Blue
Rated Voltage	
12 : DC 12V	
24 : DC 24V	
100: AC 100V	
120: AC 120V	
200: AC 200V	
Alarm	
None: Without	
B: With	