

PATLITE®

(H1 Halogen Bulb Type)

Instruction Manual

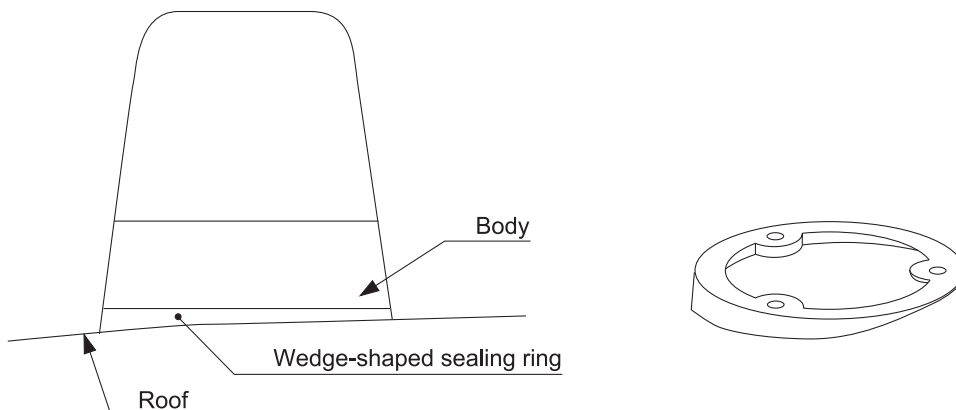
[TYPE : HP]

Thank you very much for purchasing our PATLITE product.

Prior to installation, read this manual thoroughly before using this product to ensure correct use. In addition, please store this manual for future reference when performing maintenance, repairs or inspections. When performing maintenance and repairs, etc., please be sure to reread this book. If there are any questions concerning this product, please refer to the information on the last page to ask your nearest PATLITE Sales Representative.

1. Features

- The dome is made of SAN.
A polycarbonate dome (option) is available.
- The body is made of heat resistant ABS resin.
- A large-size reflector radiates powerful flash.
- A powerful motor drives the revolving lamp, featuring durable life and minimum (about 50mA) power consumption.
- Patented gear-less drive mechanism for silent operation.
- Built to withstand the extreme shock and vibration.
- Diameter of base (ϕ 180mm), overall height (H193mm), and diameter of mounting holes (ϕ 130mm) are conforming to DIN, ISO, JIS.
- The wedge-shaped sealing ring is optionally available.

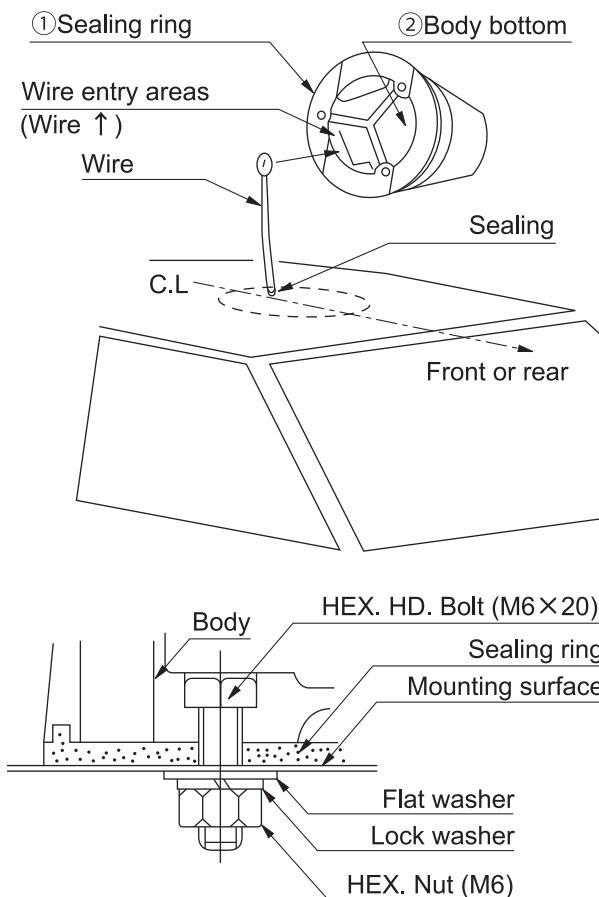


2. Cautions

⚠ Cautions

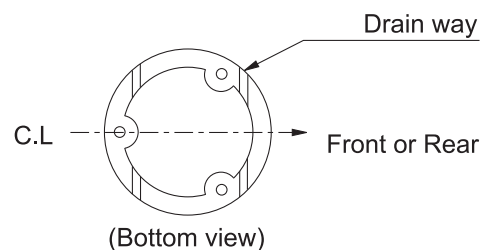
- Check the voltage before use.
 - Do not operate without the dome.
 - Switch off the light when changing the bulb.
 - Do not touch the bulb just after turning it off, as it may cause a burn.
 - Close the dome firmly to appropriate lock position.
 - Do not rotate the reflector with fingers.
 - Do not wash our product with high pressure water.
 - When cleaning the dome, wipe carefully with the water moistened linen.
Do not use thinners, benzine, gasoline or oil.
 - Do not supply oil to the motor and rotor.
 - Do not touch the glass of bulb when changing the halogen bulb.
When the glass of bulb becomes soiled, dampen a cloth with alcohol to wipe clean.
- ※ No guarantee shall be given to any defect caused by the use and remodeling beyond the scope of the instruction manual.

3. Installation



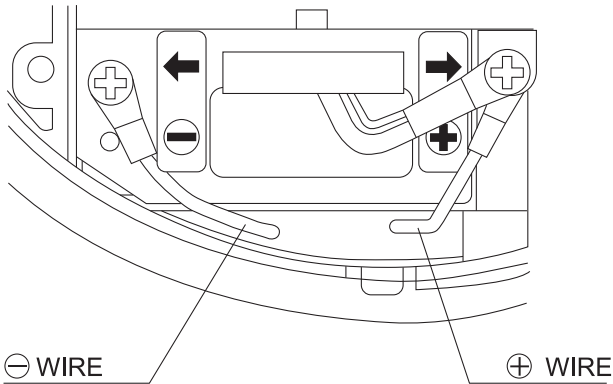
- 1). Mount the sealing ring① on the body bottom②.

Mounting direction of the sealing ring is according to the drawing.



- 2). Lead the wire into revolving lamp through the wire entry areas (WIRE↑) on the rear side of the body.

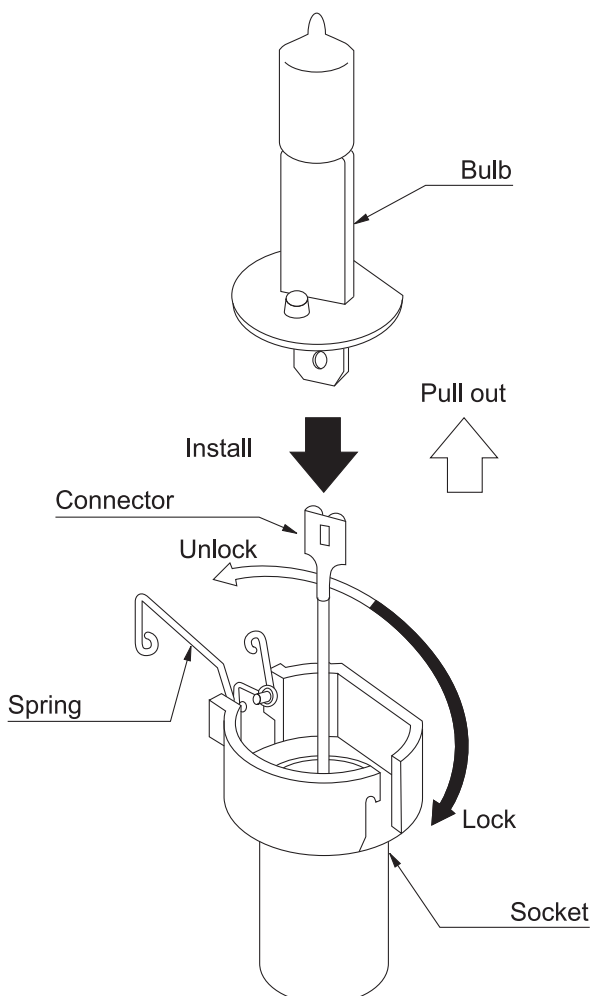
4. Wiring



Secure \oplus and \ominus wire according to the drawing, wires are led in through the wire entry areas, paying attention to the polarity of them.

5. Changing Bulb

For safety operation and to ensure best bulb performance, please wear working gloves.



● Cautions

- 1). Do not change the bulb before turning off the switch.
- 2). Do not touch the bulb just after turning it off, as it may cause a burn.

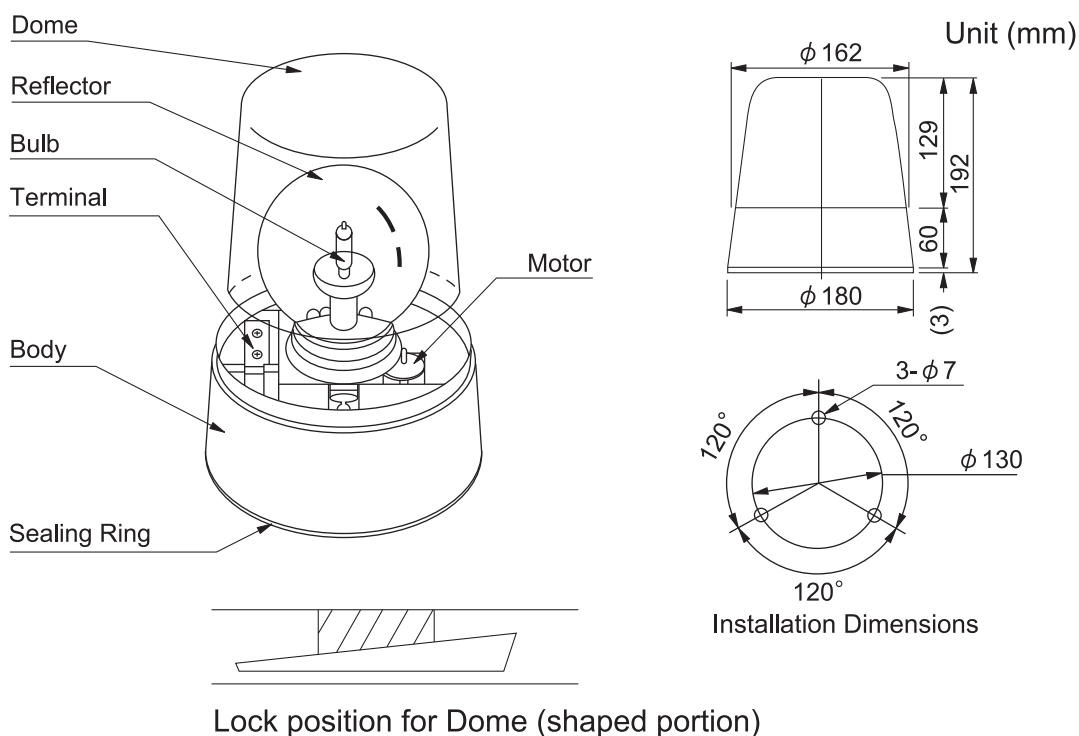
● How to remove the bulb

- 1). Unlock the spring for the bulb.
- 2). Pull out the bulb from the connector.

● How to install the bulb

- 1). insert the bulb firmly into the connector.
- 2). Put the bulb in the socket, along the flat side.
- 3). Secure the bulb with the spring.

6. Assembly • Dimensions



7. Specifications

MODEL	VOLTAGE	CURRENT	FLASHES PER MINUTE	HALOGEN BULB	Mass
HP-12	12V DC	4.7A	140Flashes per minute	12V 55W H ₁	1.0Kg
HP-24	24V DC	2.7A	160Flashes per minute	24V 70W H ₁	
※ HP-12/24	12V DC	4.8A	115Flashes per minute	12V 55W H ₁	
	24V DC	2.7A	150Flashes per minute	24V 70W H ₁	

※Motor of this model can be used with both 12V DC and 24V DC.
Be sure to fit a bulb to suit the supply voltage.

PATLITE Corporation G2G

PATLITE Corporation ※Head office	■ http://www.patlite.com/
4-1-3, Kyutaromachi, Chuo-ku, Osaka 541-0056 Japan	
PATLITE (U.S.A.) Corporation	■ http://www.patlite.com/
PATLITE Europe GmbH ※Germany	■ http://www.patlite.eu/
PATLITE (SINGAPORE) PTE LTD	■ http://www.patlite.com/
PATLITE (CHINA) Corporation	■ http://www.patlite.cn/
PATLITE KOREA CO., LTD.	■ http://www.patlite.co.kr/
PATLITE TAIWAN CO., LTD.	■ http://www.patlite.tw/
PATLITE (THAILAND) CO., LTD.	■ http://www.patlite.co.th/

A95100105	G
'16.08 UBC	