

PATLITE®

INSTRUCTION MANUAL

[Model : KG]

Thank you very much for purchasing our PATLITE product.

Prior to installation, read this manual thoroughly before using this product to ensure correct use. In addition, please store this manual for future reference when performing maintenance, repairs or inspections. When performing maintenance and repairs, etc., please be sure to reread this book. If there are any questions concerning this product, please refer to the information on the last page to ask your nearest PATLITE Sales Representative.

Safety Precautions

In order to prevent any damage to the user and other personnel or to assets, note the following:

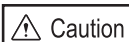
- The following symbols classifies the following precautions into two categories and explains the level of harm inflicted when caution is disregarded while using this product.

**DANGER**

Indicates an imminently dangerous condition: failure to follow the instructions may lead to death or serious injury.

**Warning**

Indicates a immediately dangerous condition: failure to follow the instructions may lead to death or serious injury.

**Caution**

Indicates a potentially dangerous condition: failure to follow the instructions may lead to slight injury or property damage.

1. Safety Precautions

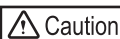
**DANGER**

caution. risk of fire

Do not put the flammable material, such as paper or cloth, on the rotating light while it is in operation. It may cause a fire.

**Warning**

- Make sure the power is off before wiring, repairing, or replasing parts to avoid short-circuiting, electric shock, or burns.
- Do not operate this product with dome removed, cracked dome or loosened dome. Possible burns from the heat of the bulb, injury from the mirror or the product failing may occur.
- Make sure power is turned off and the temperature of electric bulb cools down before repair to avoid electric shock, or burns.
- Ask a specialist if this product installation requires construction works, in order to avoid electric shock, fire, or personal injury.
- When this product is used for security purposes, it should be inspected daily. In case a malfunction should occur, it is recommended that this product be used together with other security products.
- Do not use this product to support your weight while climbing onto a machine. Mount the product so that it is clear of any moving parts - such as a machine cover.

**Caution**

- Use only specified operating voltage range. Excess voltage hastens degradation.
- Make sure not to use any other bulbs except ones described in specifications.
- Make sure to connect an external fuse to the power source as shown in the wiring example for safety.

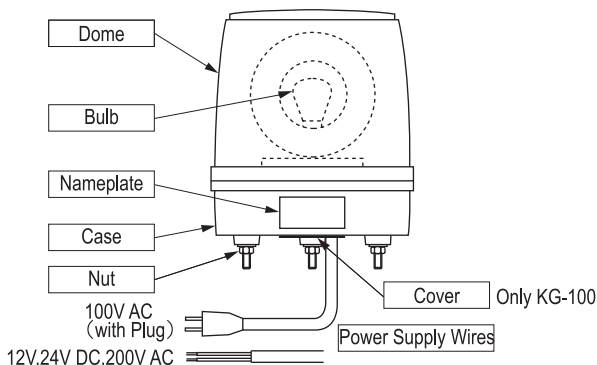
2. Model Number Configuration

K G -



- Rated Voltage
- 12 : 12V DC
- 24 : 24V DC
- 100 : 100V AC
- 200 : 200V~240V AC

3. Part Names



4 . Installation

生産終了
Production end

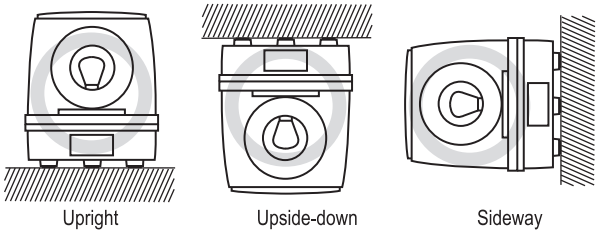
⚠ Caution

- To avoid short-life lighting, electric shock or power source failure, do not install the production in a horizontal or upside-down location where it gets wet. If water gets into the product, it will cause damage.
- When installing the unit in a high place, choose an easily accessible place where it can be maintained. Follow the precautions below to extend the bulb's life from vibration.
 - (a) Do not install directly on vibrating or shock-producing equipment.
 - (b) Do not install on a column or a wall experiencing vibration.Use rigid 'L' brackets in order to prevent movement of the light caused by wind or other vibrations.

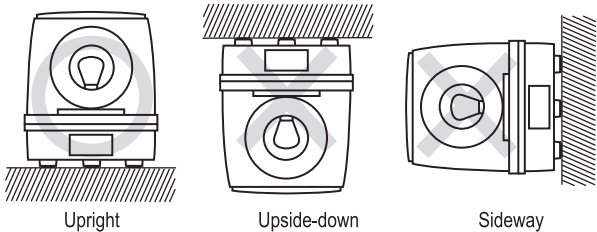
■ Installation

- Drill mounting holes in the installation panel.
- Secure the product with the supplied accessory nuts.
- The direction of the product that you can install is as follows.

【Indoor】



【Outdoor】



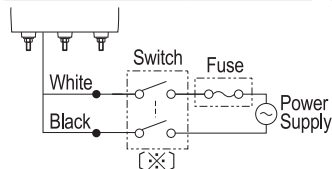
5 . Wiring

⚠ Caution

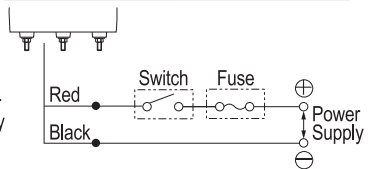
- Make sure the power is OFF before wiring. Damage may occur from short circuit of internal circuitry or cause an electric shock.
- Ensure the proper working voltage is used and that direct current or alternating current is properly applied.
- Ensure the proper wiring has been done to avoid any mistakes in wiring, or circuitry damage may occur. While making connections, refer to the wiring example, and be sure to use crimp-type terminal connections.
- Install an external fuse on the power supply side as shown in the wiring example in order to prevent damage in case of a wiring error.
- Choose proper switches and relays in consideration of inrush current. The inrush current is 10 times the rated current.
- Do not pull out, or push the lead wires into the case.

【Wiring Example】

• KG-100,200



• KG-12,24



〔※〕 For the 100V AC type, the power cord with plug.

6 . Maintenance

⚠ Caution

- Make sure power is turned off and the temperature of the bulb cools down before repair to avoid electric shock or burns.
- Be sure to use the specified replacement bulb indicated in this manual or on the nameplate.
- Use a soft cloth moistened with water to clean the Dome or Case. (Do not use thinner, benzine, gasoline or oil.)
- Do not grease the motor or rotor, it will cause the motor to stop.
- Do not use hands to rotate the Reflector.

- Check tightening torque of the screws for secure mounting.
- Change the dome if it is fogged, the fogged dome deteriorates lighting performance.

Maintenance procedure

1. Changing Dome

Please follow the procedure indicated below to change to the dome.

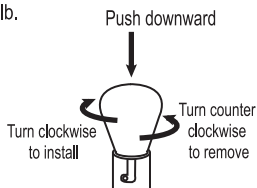
- (1) Make sure power is off before changing domes.
- (2) Remove the dome by turning it to the left.
- (3) To attach the new dome, place it onto the case and turn it clockwise.



2. Changing Bulb

Refer to the follow procedure indicated to change the bulb.

- (1) Make sure power is off before changing any bulbs.
- (2) Refer to "Changing dome" to remove the dome.
- (3) Press the bulb down and turn it counter clockwise to detach from the socket.
- (4) Affix a new bulb into the socket by pressing down and clockwise.
- (5) Attach the dome



※ Make sure not to use any other bulbs except ones described in nameplate.

Replacement Parts

The following are replacement parts available for this product.

· Dome · Bulb · Motor · Rotor rubber

For further details, refer to our company website.

7. Troubleshooting

If a problem occurs, check the following table to remedy the problem before calling for service.

Problems	Where to check	What to do
The reflector would not rotate and the lamp module stays turned off.	Is the power on ?	Check the power wiring, plug connection and fuse.
		If a switch is installed, check to see that it is turned on.
The reflector rotates but the lamp is off.	Is the light bulb burned out ?	If it is, replace it with a new one.
The lamp module is turned on but the reflector stays stopped.	Is the motor stopped? Is the motor greased?	The motor is broken or has reached the end of its life. Request for repair.

If the problem is not corrected, even after the above remedies have been performed, refer to the "Product Name" and "Specifications" to make detailed notes of the product, its problem, and then contact either the place of purchase or your nearest PATLITE Sales Representative.

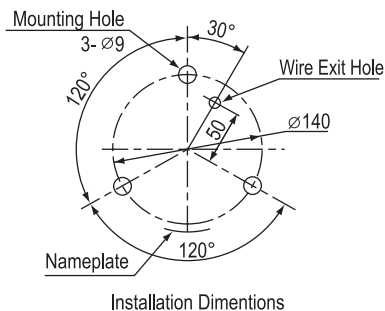
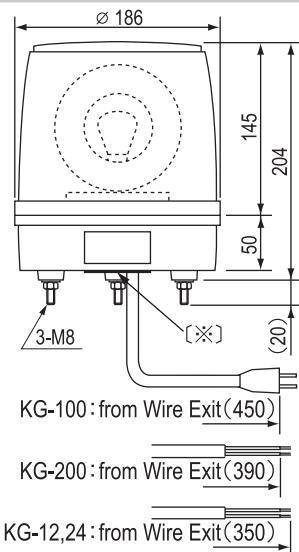
[Product Details]

Product name(Model), Lot number, Purchase Date, Symptoms of Problem

8. Specifications

1. Dimensions

(mm)



※ There is no influence in the quality though the feel of a material on surface of the cover might be different.

KG-100 : from Wire Exit(450)

KG-200 : from Wire Exit(390)

KG-12,24 : from Wire Exit(350)

2. Specifications

生産終了
Production end

Model	Rated Voltage	Current	Bulb	Mass	Wire type/Dia.
KG-100	100V AC (50/60Hz)	0.32A	120V40W	0.9kg	VCT/0.75mm ²
KG-200	200~240V AC (50/60Hz)	0.13A	240V30W		
KG-12	12V DC	2.7A	12V35W	0.7kg	AV/1.25mm ²
KG-24	24V DC	1.2A	24V35W		

※ Flashing Rate : 200 F lashes per minute

※ Protection Rate : IP23

※ Bulb Type : Glass RP35/Base BA15D (KG-100,200)/BA15S (KG-12,24)

Caution

- PATLITE Corporaton disclaims all liability for any malfunction or damage ccuring as a result of handling contrary to the instructions, cautions and warmings mentioned in this manual.
- Specifications may change without notice due to continual product improvement.

PATLITE Corporation

G2G

PATLITE Corporation ※Head office
4-1-3, Kyutaromachi, Chuo-ku, Osaka 541-0056 Japan

■ <http://www.patlite.com/>

PATLITE (U.S.A.) Corporation

■ <http://www.patlite.com/>

PATLITE Europe GmbH ※Germany

■ <http://www.patlite.eu/>

PATLITE (SINGAPORE) PTE LTD

■ <http://www.patlite.com/>

PATLITE (CHINA) Corporation

■ <http://www.patlite.cn/>

PATLITE KOREA CO., LTD.

■ <http://www.patlite.co.kr/>

PATLITE TAIWAN CO., LTD.

■ <http://www.patlite.tw/>

PATLITE (THAILAND) CO., LTD.

■ <http://www.patlite.co.th/>