

## LED Work Light Mounting Bracket

PATLED's®

## User's Manual

[Model: SZ-330KP]

Thank you for purchasing the mounting bracket for the PATLED's Light Bar for your application. Prior to installation, please read through this manual for proper installation and precautionary steps. In addition, please store this manual for future reference when performing maintenance, repairs or inspections. If you have any questions regarding this product, please contact our PATLITE Sales Representative.

## Safety Precautions

In order to prevent any damage to the user and other personnel or to assets, note the following:

◆The following symbols classifies the following precautions into two categories and explains the level of harm inflicted when caution is disregarded while using this product.

**Warning** Displays the warning "Failure to follow warning may lead to death or severe injury".

**Caution** Displays the warning "Failure to follow caution may lead from light to medium injury or may lead to property loss or injury to others".

◆The following symbols indicate and explains the nature of the information to be observed.

**[Prohibited]** This symbol indicates "prohibition", which should not be carried out by all means.

**[Enforced]** This symbol indicates "enforcement", which should be carried out by all means.

## 1. For safe application, observe the following

**Warning**

**[Prohibited]**

- Do not disassemble or modify this product.
- After installing this product to the machine, etc., do not operate it with the cover removed or use it as a step-ladder when climbing onto the machinery. Failure to comply may result in falling off the machinery or product damage may occur.

**[Enforced]**

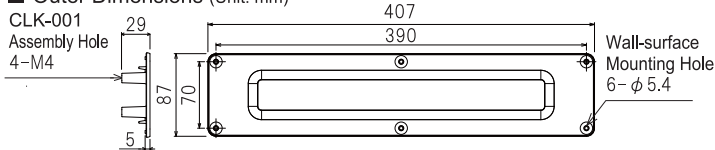
- Be sure to disconnect the power of LED Work Light when wiring, mounting, exchanging, or repairing the product.
- Request the installation and wiring to be accompanied by a professional contractor. Failure to comply may result in electric shock, fire, or falling from high places.
- Verify the installation location is a firm location which can handle the weight of the product and has no adverse vibrations. If installed in a place where vibration is frequent and/or exceeds the specifications, damage to the product may occur.
- For safety precautions, perform an annual or semi-annual preventative maintenance on the surface mount bracket and make sure all screws are securely tightened.

**Caution**

**[Prohibited]** This attachment bracket is designed only for the CLK3S-24AG type LED work light. Do not use it for any other applications

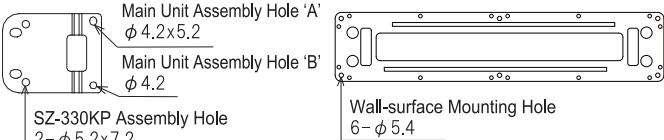
## 2. Part Names and Dimensions

## ■ Outer Dimensions (Unit: mm)



## ■ Accessories

• CLK-001: 2 pcs. • Waterproof Sheet: 1 pc.



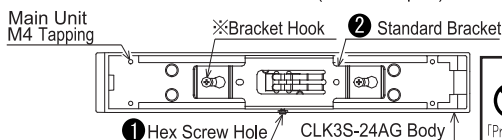
• M4x8 Screw (SUS) : 8 pcs. • M5x12 Screw (SUS) : 6 pcs. • O-ring : 6 pcs.



## 3. Installation

① Remove the standard bracket and the hexagon bolt securing it from the LED Work Light body.

Keep the removed parts nearby.  
Do not loosen the "Bracket Hooks" (screw shaped).

**Caution**

**[Prohibited]** Do not loosen or remove the Bracket Hooks (×2 places). Failure to comply will result in a decrease in waterproofing performance.

② Attach the SZ-330KP, CLK-001 and waterproof sheet onto the LED work light body.

Use screws to attach the CLK-001 to the Body (M4 tapping) and M4x8 (body assembly holes 'A' & 'B').

Fasten in order of Body Assembly Hole 'B', then Body Assembly Hole 'A'. Mounting torque is 1.4 N-m.

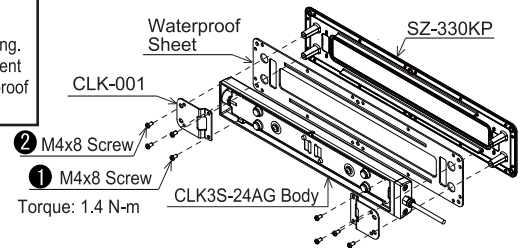
After fastening, place the waterproofing sheet onto the SZ-330KP (align with the CLK-001 assembly holes) and then place the CLK-001 (align the SZ-330KP assembly holes), and attach with the M4x8 screws. Mounting torque is 1.4 N-m.

**Insert the waterproof sheet so that the holes match the SZ-330KP Wall-surface mounting hole and the holes for the wall mounting position.**

**If the Waterproof Sheet has been removed after use, discard it and replace it with a new one.** Refer to [5. Replacement parts] and contact your nearest PATLITE Sales Representative to order.

**Caution**

**[Prohibited]** The waterproof sheet should be attached so that there is no buckling. Improper placement will cause waterproof degradation.



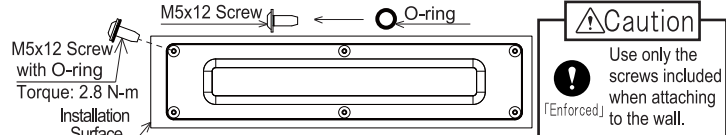
③ Tap holes for the product onto a flat surface which is strong enough to support it.

Use the M5x12 screws for the six "Wall-surface Mounting Holes" locations to attach to the mounting surface.

The mounting surface should be **sufficiently strong** with a board thickness of no more than 5mm.

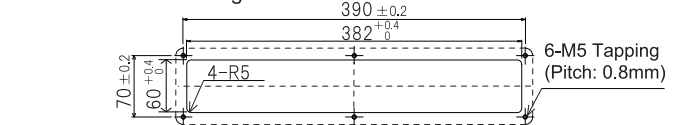
Attach the O-ring onto the M5x12 screws before mounting.

Use a 3mm hexagonal wrench to tighten the M5x12 screws. Mounting torque is 2.8 N-m.

**Caution**

**[Enforced]** Use only the screws included when attaching to the wall.

## ■ Installation Hole Diagram



Board Thickness: 5mm or less

## 4. Specifications

Model	SZ-330KP
Material	Aluminium Alloy
Mass	370g (Including Accessories)
Mounting Direction	All Directions ※1
Mounting Location	Indoor Use Only
Protection Rating	IP66F/67F (JIS C0920) ※2
Vibration Resistance	19.6 m/s <sup>2</sup>
Operating Temperature Range	-40 °C to +60 °C (RH90% or less, No Condensation)
Corresponding Series	For Model CLK3S-24AG Only
Quantity	1 set

※1 It is recommend to not use in applications in which oil and/or water can collect, when the attachment direction is facing upwards.

※2 The Protection Rating tests are performed in conjunction with the conformity of the testing procedure. However, due to the testing duration, prolonged use under the same conditions is not guaranteed.

**CAUTION**

● Specifications may change without notice due to continual product improvement.

## 5. Replacement Parts

The following replacement parts for this product are available. Please visit our company home page for more details.

• M5\_SZ-KP Screw (6 each with O-rings included)  
• Waterproof Sheet

## PATLITE Corporation

G2G

**PATLITE Corporation** ※Head office <http://www.patlite.com/>  
4-1-3, Kyutaromachi, Chuo-ku, Osaka 541-0056 Japan

**PATLITE (U.S.A.) Corporation** <http://www.patlite.com/>  
**PATLITE Europe GmbH** ※Germany <http://www.patlite.eu/>  
**PATLITE (SINGAPORE) PTE LTD** <http://www.patlite.com/>  
**PATLITE (CHINA) Corporation** <http://www.patlite.cn/>  
**PATLITE KOREA CO., LTD.** <http://www.patlite.co.kr/>  
**PATLITE TAIWAN CO., LTD.** <http://www.patlite.tw/>  
**PATLITE (THAILAND) CO., LTD.** <http://www.patlite.co.th/>