

SPECIFICATIONS

[General Specifications]

Product Name	Explosion-Proof Revolving Warning Light			
Model	RES-□□□A-□			
Rated Voltage	100VAC~110VAC (50/60Hz)	115VAC~120VAC (50/60Hz)	200VAC~220VAC (50/60Hz)	230VAC~240VAC (50/60Hz)
Operating Voltage Range	100VAC~110VAC	115VAC~120VAC	200VAC~220VAC	230VAC~240VAC
Rated Current	0.1A	0.1A	0.05A	0.05A
Flashing Rate	170±25 Flashes Per Minute			
Direction of Rotation	CW			
Bulb	12V5W			
	BA15S/G18			
Operating Ambient Temperature	-20 °C ~ +60 °C			
Ambient Pressure	80~110kpa			
Operating Ambient Humidity	45~85% (No condensation)			
Mounting Location/Mounting Direction	Indoors: Upright, Inverted and Sideways Outdoors: Upright			
Protection Rating	IP65 (Upright Direction Only)			
Vibration Resistance	44.1 m/s ² (JIS D 1601-1990)			
Luminous Intensity (No Globe)	3340 cd			
Spare Bulb	Non			
Mass(Tolerance±10%)	6.5 kg			
Outer Dimensions	Refer to the Outer Dimension Drawing			
Insulation Resistance	More than 1MΩ at 500VDC between the terminals and the chassis			
Withstand Voltage	VAC applied for 1min between terminals and chassis without breaking insulation			
	AC 1000V		AC 1500V	
Explosion Protection	Exd II B+H ₂ T6 (Flameproof Enclosure)			
Hazardous Areas	Zone1, Zone2			
Applicable Standards	TIIS Standard (JAPAN)			
Certificate Number	TC16848			
Connection	Lead-In Port: G3/4 (Cable Gland: OPTION) Wire Size: 0.75~2.0mm ² (AWG18~AWG14)			
No. RES-100A-W18C-1__2				
※ This model passed qualification test for explosion-proof structure of electric machinery and apparatuses.				
PATLITE Corporation				

Model Number Configuration

RES-□□□A-□

■ Rated Voltage

100 : AC100V
120 : AC115V~AC120
220 : AC200V~AC220V
240 : AC230~AC240V

■ Resin Globe Color

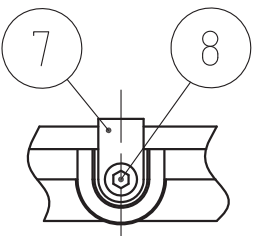
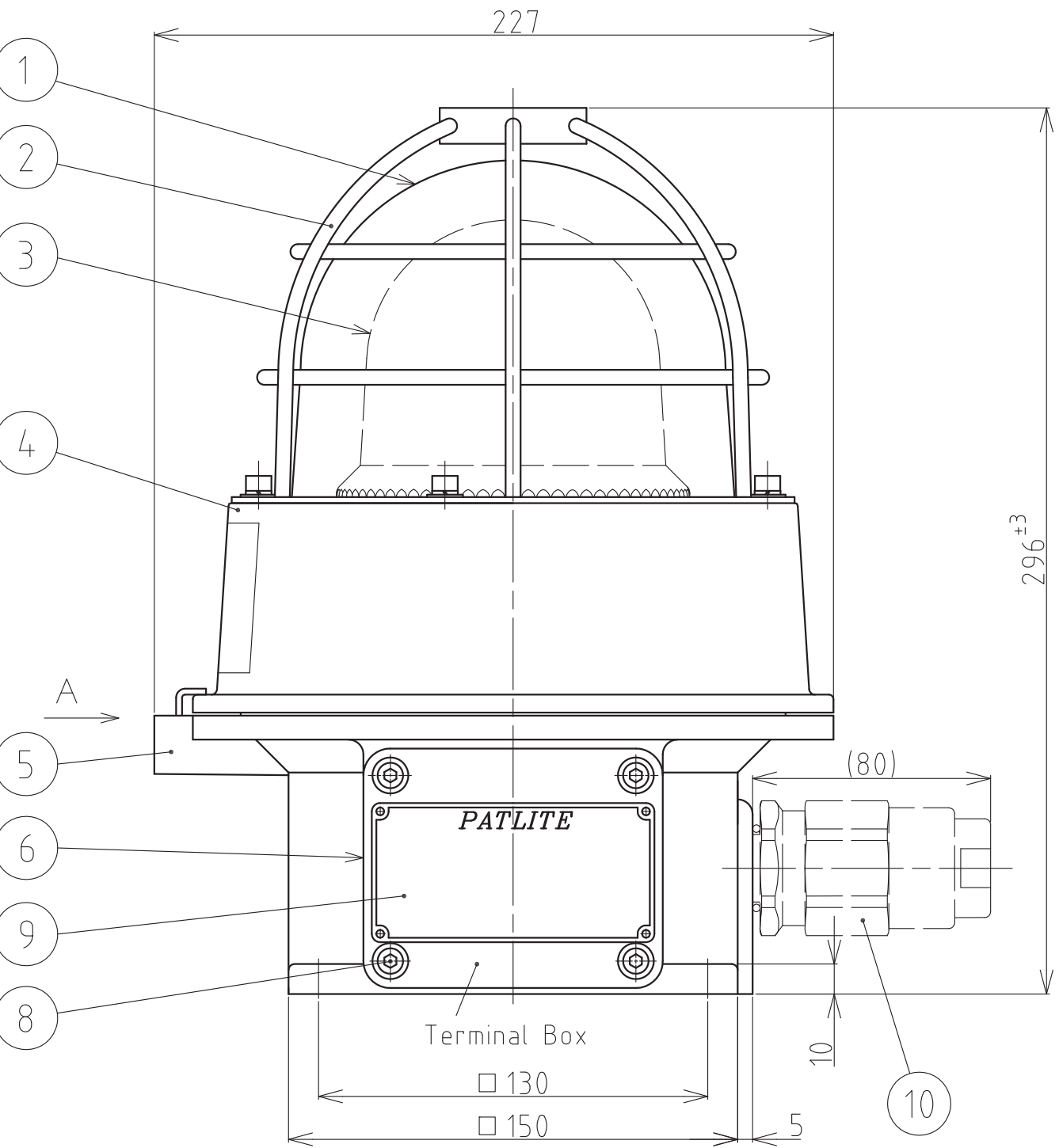
R:Red
Y:Amber
G:Green
B:Blue

Chart 1

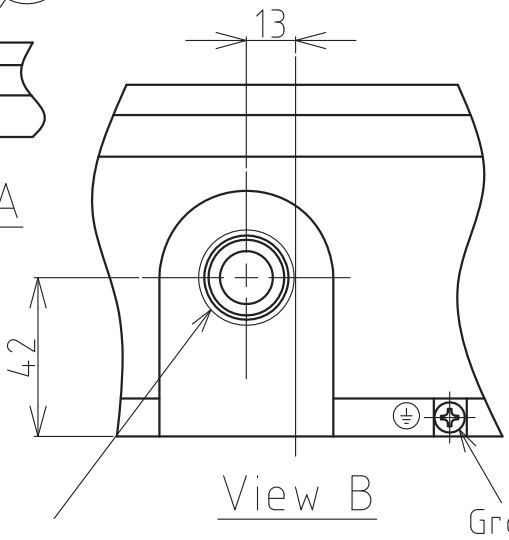
Cable Diameter	φ 12~16	φ 7.4~φ 12
Explosion-Proof Cable Gland (Option)	Order No. A28220002 Lead-In Port G3/4 Inside Screw G3/4	Order No. A28220003 Lead-In Port G3/4 Inside Screw G1/2

< Wiring Method >

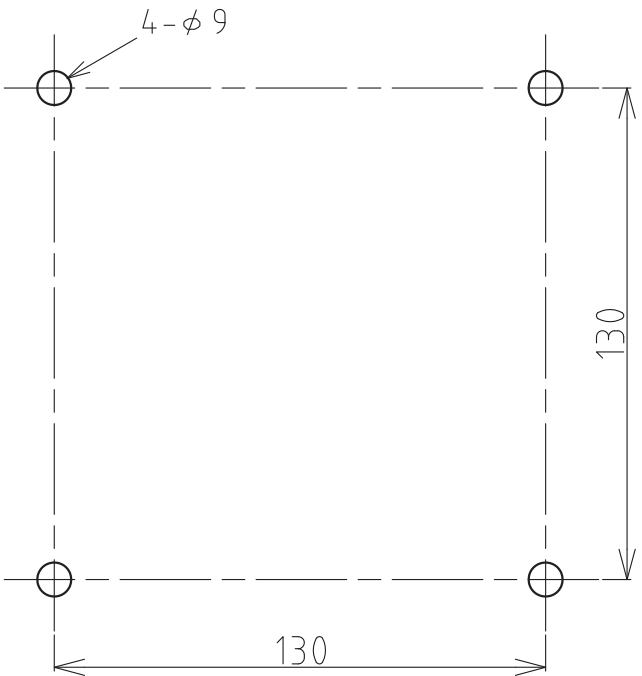
- Inside terminal box, connect white wire with plus line and black wire with minus line.
- Choose either way as follows for wiring.
 1. Using explosion-proof fitting (explosion-proof cable gland)
 2. Using conduit pipe



View A



Lead-In Port
(Internal thread profile: G3/4 for connecting explosion-proof fitting or conduit pipe)



Installation Dimension Drawing(1/2)

10	Explosion-Proof Cable Gland		1	Refer to Chart 1	Option
9	Nameplate		1		
8	Hexagon Socket Set Screw		5	SUS304, M5X12	
7	Clamp		1	SUS304	
6	Terminal Box Cover		1	ADC12, Silver Coating	
5	Bracket		1	ADC12, Silver Coating	
4	Frame		1	ADC12, Silver Coating	
3	Resin Globe		1	AS(Red,Amber,Green,Blue)	
2	Guard		1	SWRM3, φ5, Silver Coating	
1	Glass Globe		1	Hard Clear Glass	
番号 No.	部品名 Part Name	品目コード Part No.	数量 Qty.	材料 & 寸法 & 処理 Material & Size & Finish	記事 Remarks

外観図面
Outer Dimension Drawing

株式会社 パトライト
PATLITE Corporation

RES-100A-W18C-2_2