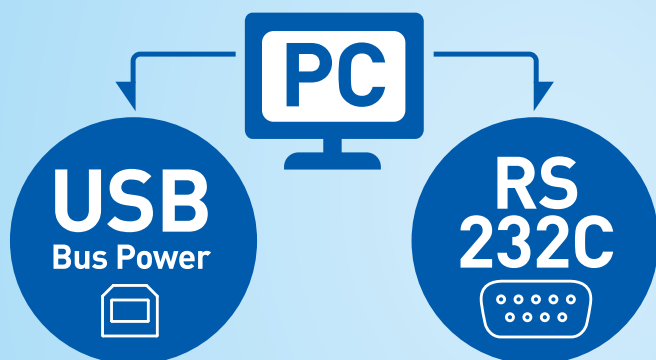


2-Way Connection



Serial
↓
Relay

Interface Converter
PHC-D08

USB Bus Power RS 232C DC24V Power Supply Output

CE RoHS C UL US *Only N type is UL and CE certified.



Off Condition

Serial
↓
Signal Tower

Interface Converter
PHE-3FB3

USB Bus Power RS 232C Signal Tower Φ40 Alarm 4 Sounds Output 80dB Flashing Pattern 2

CE RoHS UL CERTIFIED Non N type C UL US N type N type



Light & Sound

File download

You can download the following from our homepage.

User's Manual

USB Driver Installation Manual

USB Driver

* For this product, a software program which creates the data output from the USB/RS-232C port of a personal computer is required from the user.

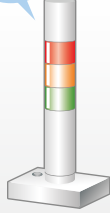
Easy to control from a personal computer.
Information is given intelligibly with light and sound.

USB Connections **PHE** **PHC**

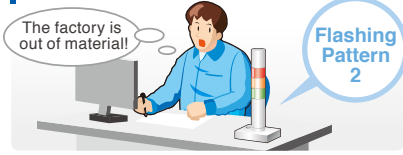


Various Alarm Sounds **PHE**

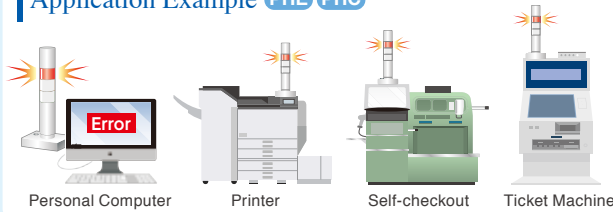
Easily adjustable slide-switch volume.
Four internal alarm sounds



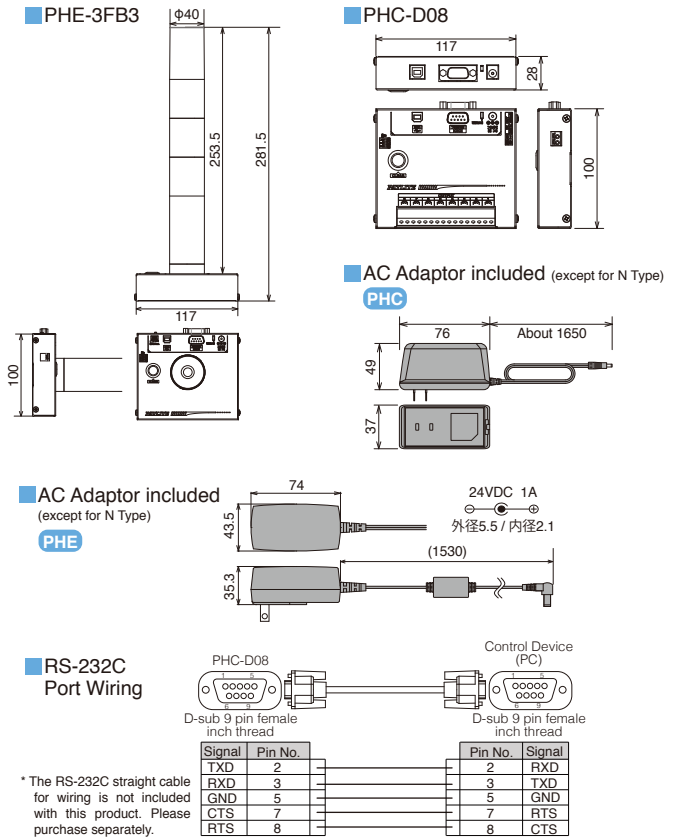
Sound can also be transmitted. **PHE**



Application Example **PHE** **PHC**



Dimensions (Unit: mm)



Communication Specifications

* Be sure to download and read the detailed operation manual which can be found at our homepage.

Communication Data Format

Send Data	Header	ID	Command	Data		End Code
				PHE	PHC	
ASCII Code (HEX Code)	@ [40H]	?? [3FH 3FH]	Refer to the command list	By command	0~8 Byte	[21H]
Byte Count	1Byte	2Byte	1Byte	0~8 Byte	Byte	1Byte

Command List

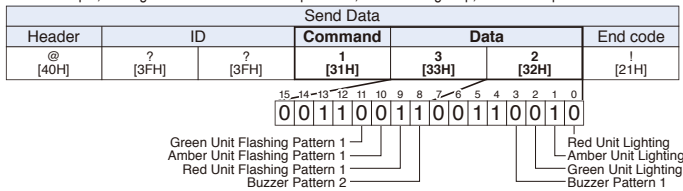
Command	Number of Data Bytes		Function	
	PHE	PHC	PHE	PHC
1 [31H]	2Byte		Turns on specified Signal Tower light and sound buzzer.	Turn ON Specified Output Terminal Block
0 [30H]	2Byte		Turns off specified Signal Tower light and stop buzzer.	Turn OFF Specified Output Terminal Block
? [3FH]	2Byte		Set ID for this product.	
S [53H]	6Byte	8Byte	Control Signal Tower and buzzer operation.	Control Specified Output Terminal Block
G [47H]	0Byte		Acquire Signal Tower and buzzer conditions.	Obtain Output Terminal Block condition
C [43H]	0Byte		Turn off Signal Tower light and stop buzzer.	Turn all Output Terminal Block OFF
M [4DH]	0Byte		Obtain information on this product.	

For PHE
 • A "1" and "0" Command has compatibility with the PC Controlled Signal Tower PHE-3FBE1.
 • Command "S" can be used to control flashing pattern 2 of the Signal Tower and buzzer patterns 3 and 4.
 • The communication protocol can also be used with the Model PHU-3.

For PHC
 • A "1" and "0" Command has compatibility with the PC Output Relay Unit, PHC-100A.
 • Command "S" can simultaneously control an output terminal to turn "ON" or "OFF."

Transmission Example

In this example, the Signal Tower red shall flash pattern 1, amber will light up, and buzzer pattern 2 shall sound.



How to Order

PHE-3FB3 - RYG **PHC-D08**

AC Adaptor AC Adaptor

Blank: AC Adaptor included Blank: AC Adaptor included
 N: AC Adaptor not included N: AC Adaptor not included

Specifications

Model	PHE-3FB3 PHE-3FB3N(AC Adaptor not included)		PHC-D08 PHC-D08N(AC Adaptor not included)	
	Rated Voltage	Main Unit 24VDC (Main Unit)	5VDC (USB Bus Power)	AC Adaptor Input: 100VAC - 240VAC (50/60Hz) Output: 24VDC 90VAC - 264VAC (AC Adaptor)
Operating Voltage Range	Standby 1.2W (100VAC)	0.4W (100VAC)	Maximum 4.4W (100VAC) 16W (100VAC)	
Rated Power Consumption	Operating Ambient Temperature 0°C to +40°C			
Operating Ambient Temperature	Operating Ambient Humidity 20% to 85% RH (No Dew or Condensation)			
Operating Ambient Humidity	Mounting Location and Direction Indoor, Upright			
Protection Rating	IP20			
Mass	545g (±10%)		370g (±10%)	
Interface	USB Port USB 2.0 Conformity (Bus-powered)		Standard Type B (Female)	
Luminous Intensity *1	Serial Port RS-232C Conformity		D-Sub 9 pin (Male)	
Sound Pressure Level	80dB or more (1m from the buzzer)			
External Contact Output	Number of Contacts 8			
Rated Voltage and Current	Contact Specifications --- Non-Voltage Contact (Normally Open Contact)			
The power supply output terminal *2	Rated Voltage and Current --- 30VDC/3A			
Accessories	Rated Power Output --- 24VDC/500mA or less			
Sound Reduction sheet	AC Adaptor (except for N Type), Installation Manual, Rubber Feet			
Supported OS *3	Windows 7(32/64bit), Windows 8(32/64bit), Windows 8.1(32/64bit), Windows 10(32/64bit), Windows Server 2008 R2, Windows Server 2012, Windows Server 2012 R2			

*1 The Signal Tower may be dark when being operated by USB bus power. *2 The power supply output terminal cannot be used without an AC Adaptor connected. Be sure to connect an AC Adaptor when using the power supply output terminal.
 *3 "Windows", and the Microsoft Corporation are registered trademarks of the Microsoft Corporation of America and other countries.

PATLITE Corporation

4-4-25, Hommachi, Chuo-ku, Osaka-shi, 541-0053 Japan
 International Sales Division
 TEL: +81-6-7711-8953 FAX: +81-6-7711-8961 E-mail: overseas@patlite.co.jp

PATLITE (U.S.A.) Corporation

20130 S. Western Ave. Torrance, CA 90501, U.S.A.
 TEL: +1-310-328-3222 FAX: +1-310-328-2676 E-mail: sales@patlite.com

PATLITE (SINGAPORE) PTE LTD

No.2 Leng Kee Road, #05-01 Thye Hong Centre, Singapore 159086
 TEL: +65-6226-1111 FAX: +65-6324-1411 E-mail: sales@patlite.com.sg

PATLITE (CHINA) Corporation

Room 1102-1103, No.55 Lane 777, Guangzhong Road (West), Zhabei District, Shanghai, China 200072
 TEL: +86-21-6630-8969 FAX: +86-21-6630-8938 E-mail: sales@patlite.cn

PATLITE (THAILAND) CO., LTD.

Olympia Thai Tower, 15th Floor 444 Ratchadapisek Road Samsenok, Huay Kwang Bangkok 10310, Thailand
 E-mail: sales@patlite.co.th

PATLITE Europe GmbH

Am Soeldnermoos 8, D-85399 Hallbergmoos, Germany
 TEL: +49-811 9981 9770-0 FAX: +49-811 9981 9770-90 E-mail: info@patlite.eu

PATLITE KOREA CO., LTD.

A-2603, Daesung D-POLIS, 606, Seobusaet-gil, Geumcheon-gu, Seoul, 08504, Korea
 TEL: +82-2-523-6636 FAX: +82-2-861-9919 E-mail: sales@patlite.co.kr

PATLITE TAIWAN CO., LTD.

2F-1, No.215, Sec. 2, Chengde Rd., Datong Dist., Taipei City 10364, Taiwan (R.O.C.)
 TEL: +886-(0)2-2555-1611 FAX: +886-(0)2-2555-1621 E-mail: info@patlite.tw

CAUTION

To ensure correct use of these products, read the "Instruction Manual" prior to use. Failure to follow all safeguards can result in fire, electric shock, or other accidents. Specifications are subject to change without notice.