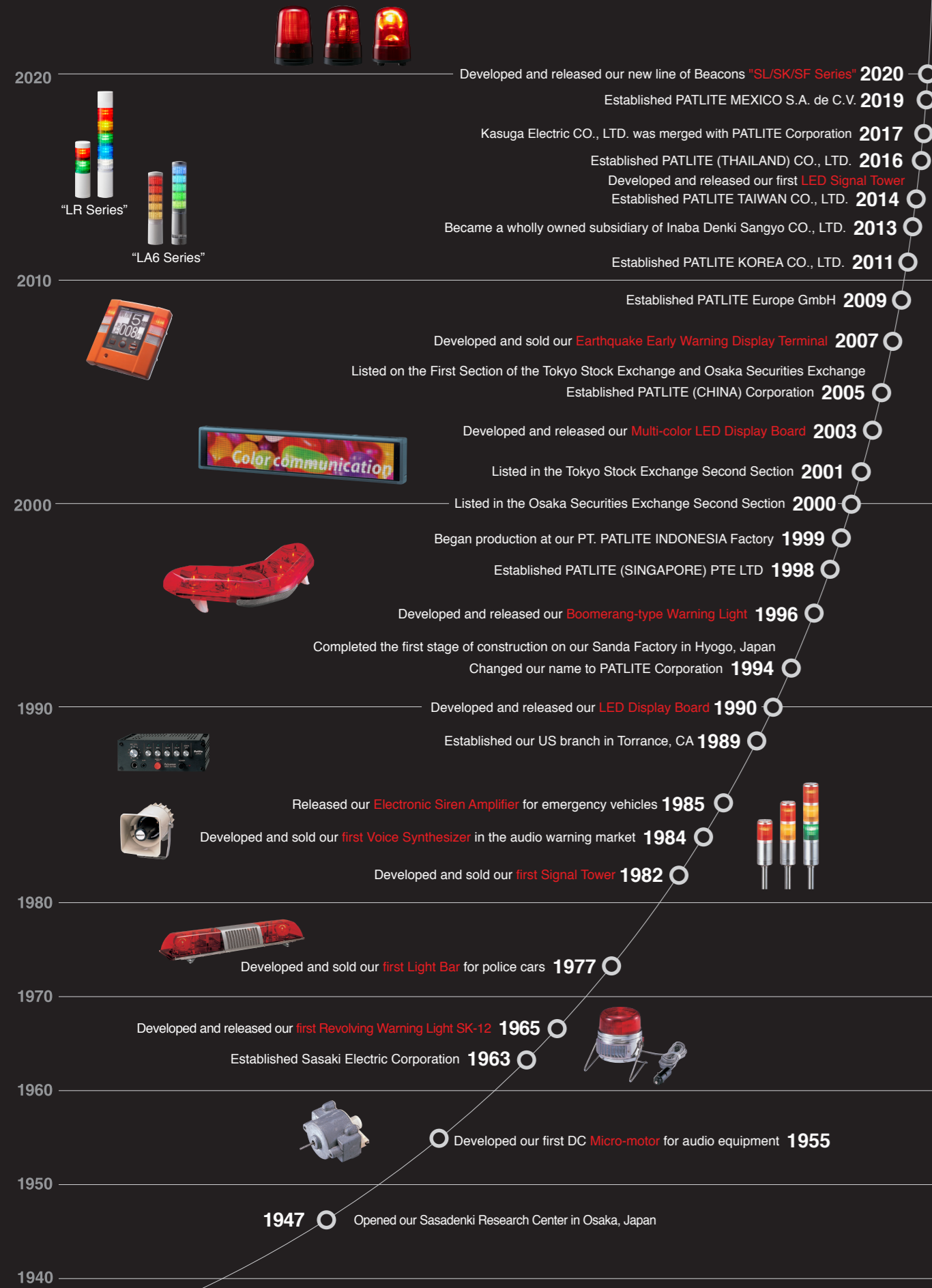
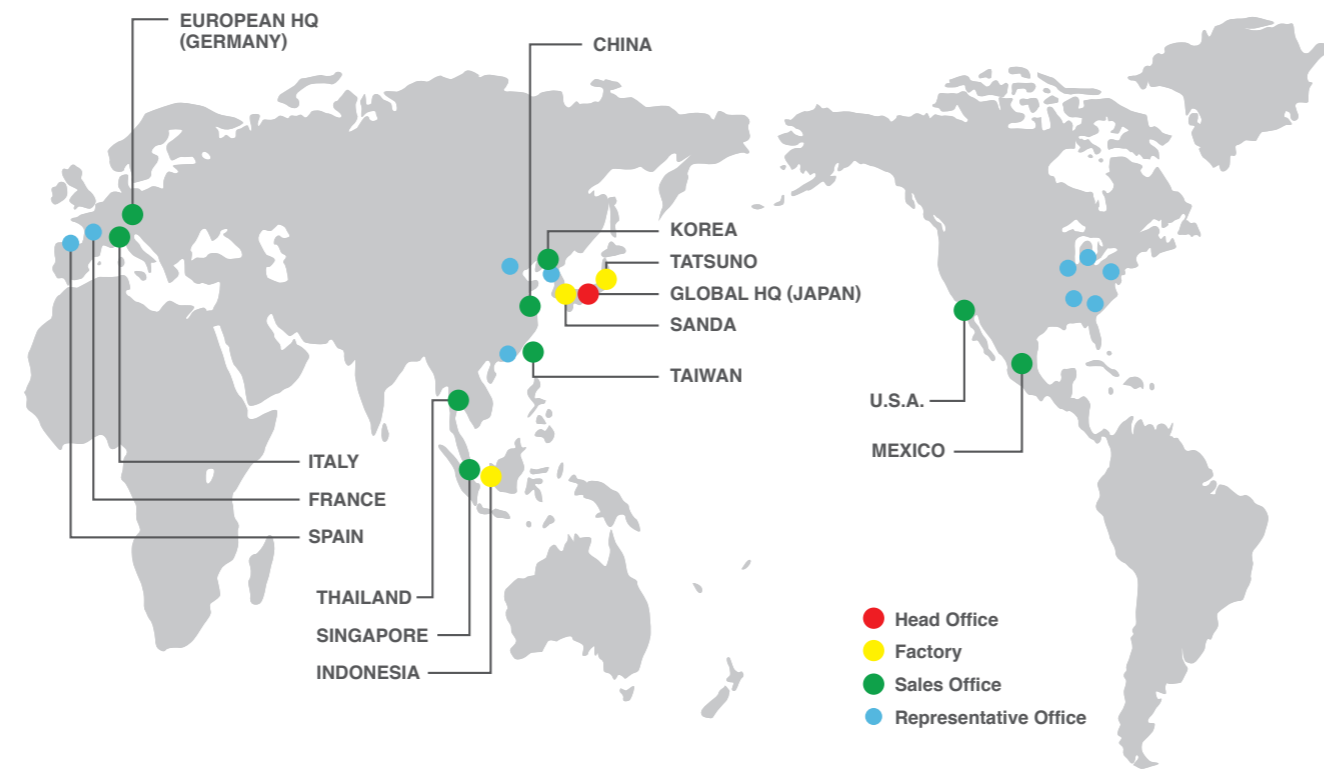


History of PATLITE



PATLITE Global Network



PATLITE (SINGAPORE) PTE LTD

No.2 Leng Kee Road, #05-01 Thyee Hong Centre, Singapore 159086
TEL.+65-6226-1111 FAX.+65-6324-1411 E-mail: sales@patlite.com.sg

PATLITE Corporation

4-1-3, Kyutaromachi, Chuo-ku, Osaka 541-0056 Japan
International Sales Division
TEL.+81-6-7711-8953 FAX.+81-6-7711-8961 E-mail: overseas@patlite.co.jp

PATLITE (U.S.A.) Corporation

20130 S. Western Ave. Torrance, CA 90501, U.S.A.
TEL.+1-310-328-3222 FAX.+1-310-328-2676 E-mail: sales@patlite.com

PATLITE (CHINA) Corporation

Room 1102-1103, No.55, Lane 777, Guangzhong Road (West), Jing an District, Shanghai, China 200072
TEL.+86-21-6630-8969 FAX.+86-21-6630-8938 E-mail: sales@patlite.cn

PATLITE Europe GmbH

Am Soeldnermoos 8, D-85399 Hallbergmoos, Germany
TEL.+49-811-9981-9770-0 FAX.+49-811-9981-9770-90 E-mail: info@patlite.eu

PATLITE KOREA CO., LTD.

A-2603, Daesung D-POLIS, 606, Seobusaet-gil, Geumcheon-gu, Seoul, 08504, Korea
TEL.+82-2-523-6636 FAX.+82-2-861-9919 E-mail: sales@patlite.co.kr

PATLITE TAIWAN CO., LTD.

2F-1, No.215, Sec. 2, Chengde Rd., Datong Dist., Taipei City 10364, Taiwan (R.O.C.)
TEL.+886-2-2552-9611 FAX.+886-2-2552-9811 E-mail: info@patlite.tw

PATLITE (THAILAND) CO., LTD.

Olympia Thai Tower, 15th Floor 444 Ratchadapisek Road Samsennook, Huay Kwang Bangkok 10310, Thailand
TEL.+66-2-541-5431 FAX.+66-2-541-5429 E-mail: sales_150716@patlite.co.th

PATLITE MEXICO S.A. de C.V.

Plaza de La Paz No. 102, int. 712 Guansuato Puerto Interior, Silao, Gto, C.P.36275, Mexico
TEL.+52-472-748-9124 E-mail: ventas@patlite.com.mx

www.patlite.com

● PATLITE, the PATLITE logo are either registered trademarks or trademarks of PATLITE Corporation in JAPAN and/or other countries.
● MPEG Layer-3 audio coding technology licensed from Fraunhofer IIS and Thomson Licensing.
● The names of other companies and products are trademarks or registered trademarks of their respective companies.

CAUTION
To ensure correct use of these products, read the "Instruction Manual" prior to use. Failure to follow all safeguards can result in fire, electric shock, or other accidents. Specifications are subject to change without notice.

0-A113 EN 1912 A

PATLITE®

DIGEST CATALOG

2020



www.patlite.com

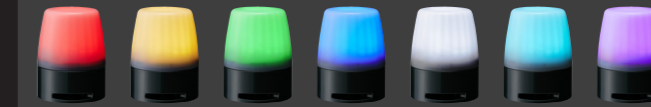
FEATURED MODEL IO-Link Series



IO-Link Signal Beacons NE-IL

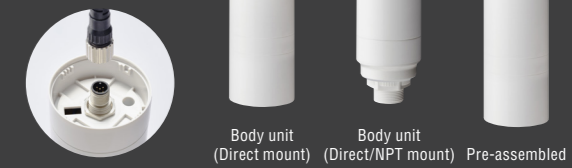
Φ56mm IP65 NEMA 4X/13 88 dB at 1 m
Touch Sensor M12 1 Analog Input 1 Digital Input

7 colors in one unit



IO-Link Signal Tower LR6-IL

Φ60mm IP65 NEMA 4X/13 84 dB at 1 m
M12 WD Compatible



FEATURED MODEL Signal Beacons NE-A Series



Multi-color 7 colors in one unit

Φ56mm IP67 IP65 (Buzzer) NEMA 4X/13 88 dB at 1 m Touch Sensor Cable 2m



Mono-color

Φ56mm IP65 Screwless Terminal Block NEMA 4X/13



FEATURED MODEL WD Series

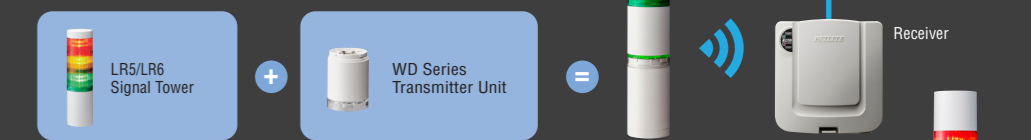
Predictive Maintenance | Detailed Downtime Analysis
Mitigate Bottlenecks | OEE Improvement | Plant-wide Visibility

Wireless Data Acquisition System WD Series and LR Series

The WD Series is a retrofit solution for select PATLITE Signal Towers enabling wireless data acquisition and real-time monitoring.

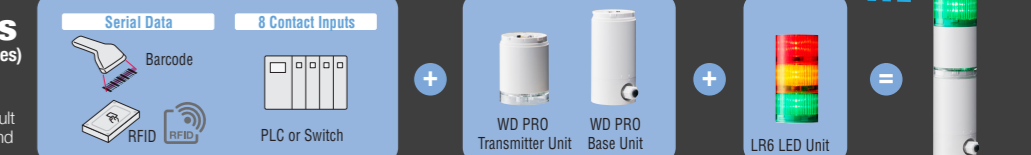


WD Series



WD PRO Series (Additional data points to WD Series)

WD PRO Series availability vary depending on country. Please consult PATLITE for more product details and availability information.



Network Monitoring Signal Tower

NH-3FV2

- LAN, RSH, SNMP V1-2, MP3
- 88 dB at 1 m, 10 Sounds, 60 Messages, 4 Inputs
- 1 Output, HTPP, NHP $\phi 40$ mm, NHL $\phi 60$ mm

NH-3FB2

- LAN, RSH, SNMP V1-2
- 80 dB at 1 m, 4 Sounds, HTPP
- NHP $\phi 40$ mm, NHL $\phi 60$ mm



Network Signal Tower

LA6-POE

- LAN, Modbus/TCP, Socket
- IP54, 85 dB at 1 m, 11 sounds
- HTTP, $\phi 60$ mm, 21 Colors LED
- PoE



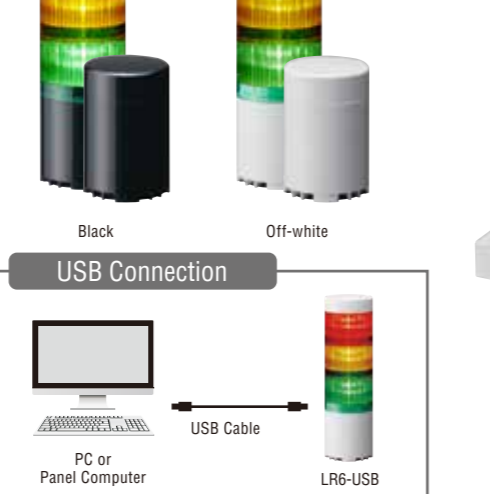
USB Signal Tower

LR6-USB

- USB Bus Power, 80 dB at 1 m, 5 sounds
- $\phi 60$ mm, IP65, NEMA 4X/13

PHE-3FB3

- USB Bus Power, RS-232C, 80 dB at 1 m, 4 Sounds
- $\phi 40$ mm



Interface Converter

NBM-D88N

- LAN, RSH, SNMP V1-2
- 8 Inputs, 8 Outputs, HTPP

PHC-D08N

- USB Bus Power, RS-232C, 8 Outputs



Global AC Adaptor (For NH Series, PHE, NBM, PHC)

ADP-001

Compatible Regions: Japan, USA, Canada, Europe, China, Taiwan, Korea, Indonesia, Thailand, Philippines, Vietnam

Slim Towers

MP-B

- 1 Sound, 80 dB at 1 m
- $\phi 25$ mm, LED, IP42, NPN Open Collector

MP

- $\phi 30$ mm, LED, IP65, M-12 Connector, Open Collector

LR Series

LR4

- $\phi 40$ mm, Modular Type, LED, 85 dB at 1 m, 4 Sounds, IP65, NEMA 4X/13, Open Collector

LR5

- $\phi 50$ mm, Modular Type, LED, 85 dB at 1 m, 4 Sounds, IP65, NEMA 4X/13, Open Collector

LR6

- $\phi 60$ mm, Modular Type, LED, 88 dB at 1 m, 4 Sounds, IP65, NEMA 4X/13, Open Collector

LR7

- $\phi 70$ mm, Modular Type, LED, 90 dB at 1 m, 4 Sounds, IP65, NEMA 4X/13, Open Collector

LR Series Modular Components: Body Units, Buzzer Units, LED Units

INNOVATIVE MODEL

LA6

- $\phi 60$ mm, IP54 (Buzzer), 21 Colors LED, 85 dB at 1 m, 11 Sounds, IP65
- Open Collector, Single Display, Time-trigger, Pulse-trigger

UNIQUE DESIGN MODELS

LS7

- $\phi 70$ mm, LED, 85 dB at 1 m, 2 Sounds, IP65, IP54 (Buzzer), Open Collector

WE

- W90mm D37.5mm, LED, 90 dB at 1 m, 2 Sounds, IP65, Open Collector

WME-D

- W70mm D80mm, LED, 93 dB at 1 m, 2 Sounds, IP54, Open Collector

Explosion-proof

ST-PA-LR6 (Zone 1 / 2 / 21 / 22)

LR4-EX (Zone 2 / 22)

LR6-EX (Zone 2 / 22)

CLA-EX (Zone 2 / 22)

CLK-EX (Zone 2 / 22)

CLN-EX (Zone 2 / 22)

LED Work Lights

CWA

- IP65, DAYLIGHT COLOR LED, 6500K

CWF

- IP20, DAYLIGHT COLOR LED, 5700K

CLN-A

- IP66G, IP67G, IP69K, DAYLIGHT COLOR LED, 6500K

CLK-SA/SG

- IP66G, IP67G, IP69K, DAYLIGHT COLOR LED, 6500K, WHITE COLOR LED, 5000K

CLK

- IP66G, IP67G, IP69K, DAYLIGHT COLOR LED, 6500K, WHITE COLOR LED, 5000K

Signal Beacons

NEW BEACON LINE

SL

- SL08 $\phi 80$ mm, SL10 $\phi 100$ mm, SL15 $\phi 150$ mm
- Select from 3 light patterns: Continuous, Blinking, Triple-flash

SF

- SF08 $\phi 80$ mm, SF10 $\phi 100$ mm
- Select from 22 light patterns: Rotating (60rpm, 120rpm, 180rpm), Flash (Single, Double, Triple), Pulse, Dimmed, Half-side

SK

- SKS $\phi 80$ mm, SKH $\phi 100$ mm, SKP $\phi 150$ mm
- Rotating 120rpm

RLR

- $\phi 162$ mm, LED, IP66, 105RPM

LFH

- $\phi 100$ mm, LED, IP66, Triple-flash

PFH-BT

- $\phi 100$ mm, LED, IP55, Single-flash, Double-flash, Battery-operated

Audible Products

BSV/BSV-L

- MP3, 87 dB at 1 m, 63 second Playback, 520 second Playback, IP54

EHS/EHV (12/24V DC:CE Compliant)

- MP3, 110 dB at 1 m, IP65, 32 Sounds, EHS

BK/BKV (24V DC:CE Compliant)

- MP3, 95 dB at 1 m, 63 second Playback, IP54, NPN Open Collector, BKV

LKEH

- MP3, LED, 105 dB at 1 m, IP53, 32 Sounds, 63 second Playback, LKEH-FV

Options: SD Card (2 GB), SDV-2GP