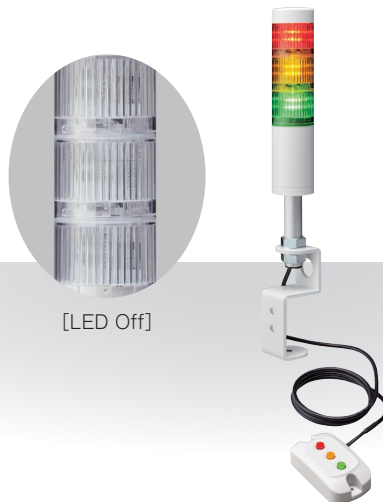


Signal Tower with Switch Box

HSST



* FB278 only

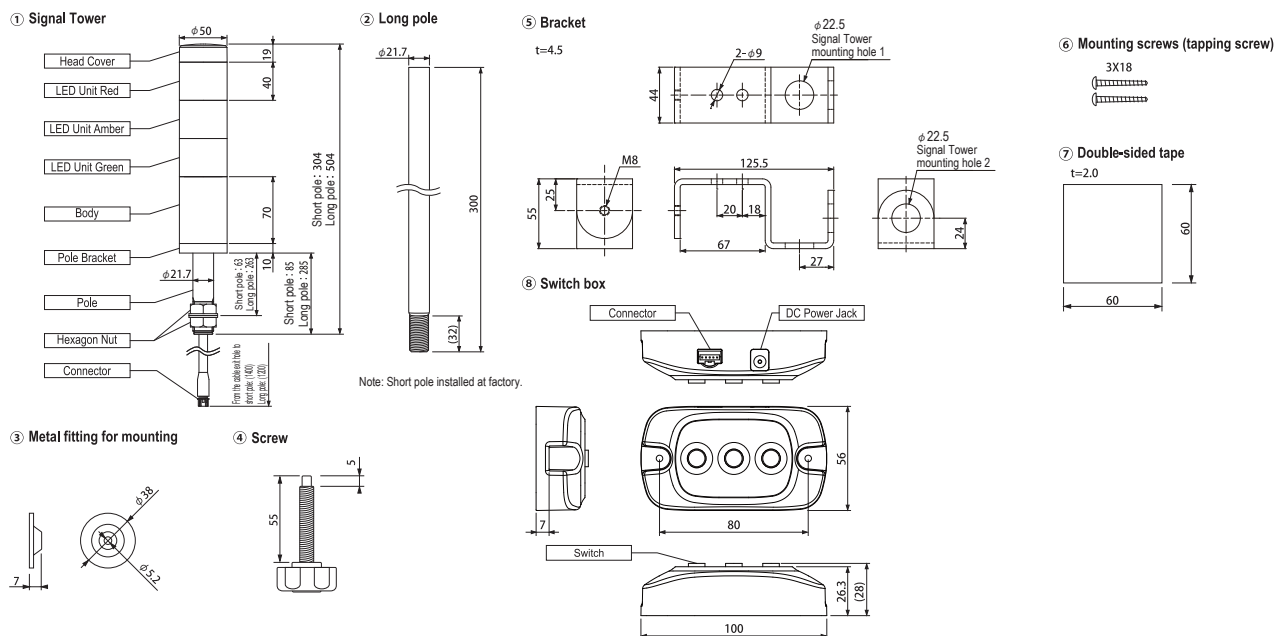


[LED Off]

Product List

Model Number	Rated Voltage	Power Consumption	Mass
HSST-3M2-RYG	100~240V AC	4W	Signal Tower with short pole: 0.36kg; Signal Tower with long pole: 0.47kg; Bracket: 0.33kg; Switch box: 0.07kg, Mounting cup and screw: 0.05kg.
HSST-3M2N -RYG+FB278			

Dimensions (mm)



Mounting Method

