

Network Monitor MP3 Voice Annunciator Signal Tower

NH-FV



CE	RoHS 10	FCC	UL	IP20	Indoor Use	Upright Mounting	Ambient Temperature 0°C~40°C	Ethernet	HTTP Command
RSH	PING	SNMP	SLMP	E-mail Alerts	SOCKET	Continuous On	60 Flashes per Minute	120 Flashes per Minute	88dB
70 Alarm Sounds	4 Inputs	1 Output							



Model Number Configuration

NHL-3FV2N-RYG

① Size ② Tiers ③ AC Adapter ④ Luminous Color

① Size P = Φ40 L = Φ60	② Tiers 1 = 1 tier 2 = 2 tiers 3 = 3 tiers 4 = 4 tiers 5 = 5 tiers	③ AC Adapter Blank = AC Adapter included W*1 = AC Adapter and replacement plug included 	④ Luminous Color 1 = 1 tier: R / Y / G 2 = 2 tiers: RY / RG 3 = 3 tiers: RYG 4 = 4 tiers: RYGB 5 = 5 tiers: RYGBG
------------------------------	---	---	--

N*1 = AC Adapter not included

*1. Available for 3-tier models only

Specification

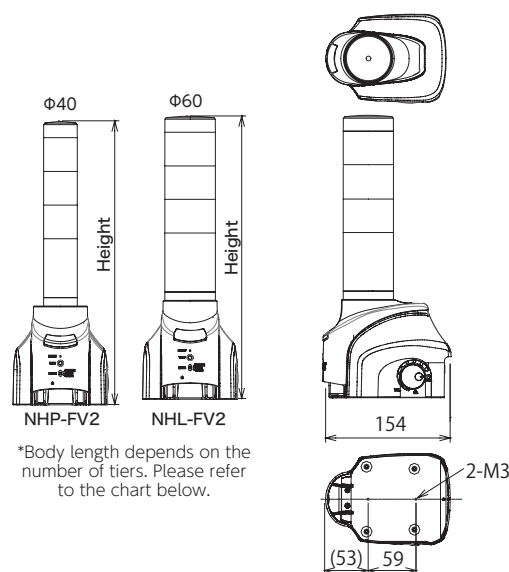
Protocols (Physical layer ~Application layer)	Physical layer: Ethernet (IEEE802.3 compliant) 10BASE-T/100BASE-TX (auto-negotiation, full-duplex/half-duplex) Data link layer: CSMA/CD Network layer: IP/ICMP/ARP Transport layer: TCP/UDP Application layer: HTTP/SMTP/SNMP/RSH/NTP/POP/DNS/SOCKET/DHCP/SLMP
Alarm Sound	4 patterns (short intermittent beeps / slow intermittent beeps / 2 short intermittent beeps / continuous beep)
Playback Mode	Priority playback/Memory playback after input
Volume Control	Volume adjustment knob / Analog volume settings from device setup browser

Optional Parts

For details refer to P. 93 to P. 98

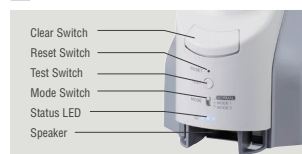
Product Description	Model Number
Wall Mount Bracket	NH-WST2
Tint film	NHL-TF (for NHL-FV2/FB2 types) NHP-TF (for NHP-FV2/FB2 and PHE-3FB3 types)

Dimensions (mm)

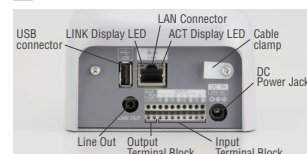


*Body length depends on the number of tiers. Please refer to the chart below.

Front



Back



NHP-□ FV2 type main body height

Number of Tiers	1	2	3	4	5
Body Height (mm)	256	296	336	376	416

NHL-□ FV2 type main body height

Number of Tiers	1	2	3	4	5
Body Height (mm)	256	296	336	376	416

Product List

Model Number	Size (mm)	Number of Tiers	Rated Voltage	Message Recording	AC Adapter	Luminous Color	Power Consumption	Mass *2
NHP-3FV2-RYG	Φ40	3	100-240V AC *1	Preset sounds + User programmable capability	Yes	Red, Amber, Green	6.5W	1.02 kg
NHP-3FV2W-RYG	Φ40	3	100-240V AC *1	Preset sounds + User programmable capability	Yes	Red, Amber, Green	6.5W	1.02 kg
NHP-3FV2N-RYG	Φ40	3	100-240V AC *1	Preset sounds + User programmable capability	None	Red, Amber, Green	6.5W	1.02 kg
NHL-3FV2-RYG	Φ60	3	100-240V AC *1	Preset sounds + User programmable capability	Yes	Red, Amber, Green	6.5W	1.15 kg
NHL-3FV2W-RYG	Φ60	3	100-240V AC *1	Preset sounds + User programmable capability	Yes	Red, Amber, Green	6.5W	1.15 kg
NHL-3FV2N-RYG	Φ60	3	100-240V AC *1	Preset sounds + User programmable capability	None	Red, Amber & Green	6.5W	1.15 kg

*1. Using AC adapter *2. Excluding AC adapter

NH-FV

LAN/USB/
PoE/Wireless

Signal Tower

Beacons

Cube Tower

Audible Alarms
and MP3 Voice
Annunciators

Hybrid Signaling
Devices

LED Illumination

Optional Parts

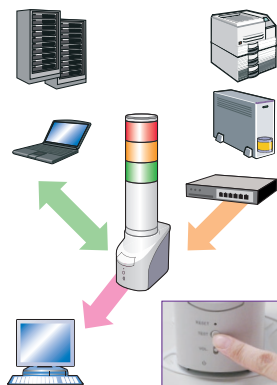
Event Monitoring

PING Monitoring

Each NH Tower can PING up to 24 devices. When a PING response fails, visual, audible, and/or email alerts are sent to administrators. These alerts can be customized based on the severity of the issue.

Application Monitoring

The NH Tower can monitor the performance of standard software and web applications, and notify administrators instantly of any errors.



SNMP v1 · v2c

The NH Towers can send, receive, and analyze TRAP information. Register up to 16 groups (4 nodes per group).

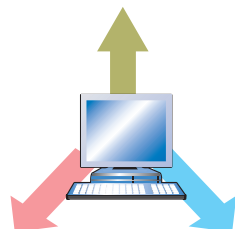
Self Diagnosis Function

With the test switch located on the front of the NH Tower, users can test various functions without having to login to the device through the network.

Supported Protocols

HTTP Commands

The NH accepts HTTP commands sent through a web browser or PLC to trigger NH Series visual and audible alert functions.



RSH Command

RSH can be used to automatically run commands based on event information from network management software and various monitoring tools on the NH Series to trigger visual and audible alert functions.

SOCKET Communication

Compatible with PHN command

Control digital output with a 2-byte command

* NH-FV Series does not support sound playback using PHN compatible commands.

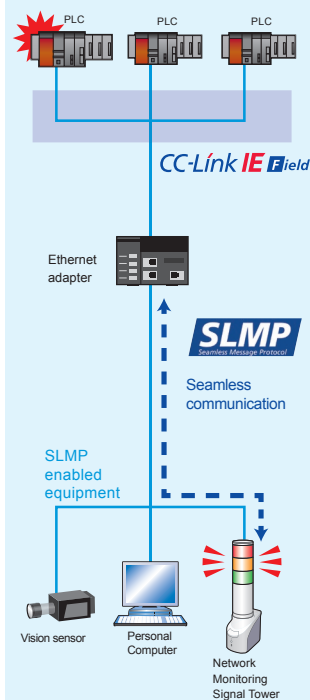
Compatible with PNS command

The NH accepts an application-level protocol called PNS (developed by PATLITE) to establish connection between client and server and to control visual and audible alert functions.



SLMP, MC protocols supported. You can connect the NH to a CC-Link IE field network.

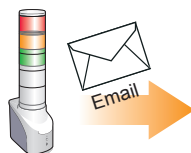
The NH regularly sends commands to PLCs in the CC-Link IE field network, and can notify you of retrieved data by light, sound, email, and/or trap.



Email Transmission

Send email reports of various network events to up to 8 addresses.

The subject and body can be customized and can be automated to be sent in a variety of situations

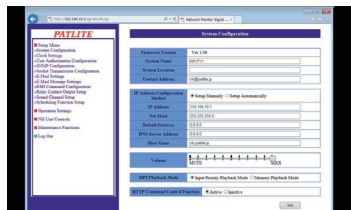


SNMP TRAP Transmission

Send emails to a maximum of 8 addresses.

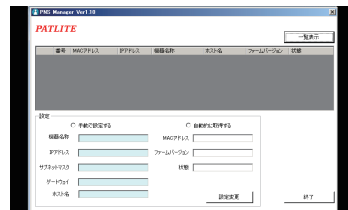
Device Setup Brower

The settings of the NH can be easily configured on your PC via the setup browser. This also enables remote firmware updates.



PNS Manager

This software configures PNS protocol settings. Confirm and change settings of each NH unit while multiple units are installed on the network.



Supports DHCP

Dynamic Host Configuration Protocol (DHCP) is a network management client/server protocol that automatically assigns an IP address to each device on a network so they can communicate with other IP networks.

Supported operating systems:
Windows®XP/Windows Vista®/Windows® 7/
Windows® 8/Windows® 8.1/Windows®10

LAN-Environment:
The 10BASE-T/100BASE-TX UDP is running.

Software: NET Framework 3.5 or later

Compatible models: NH-FB Series, NH-FV Series, NBM-D88